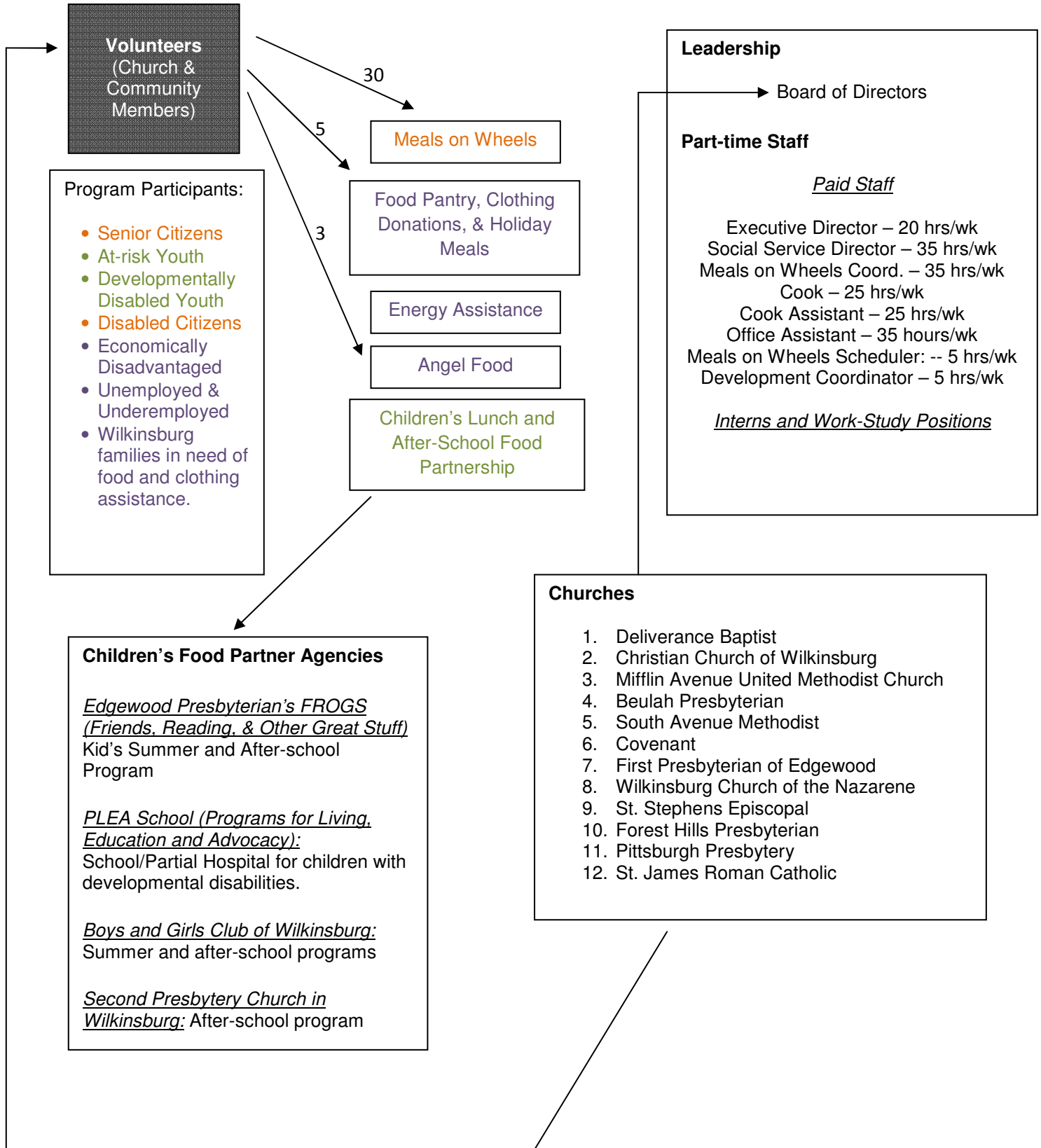


Wilkinsburg Community Ministry Program Structure



Volunteers
(Church & Community Members)

Program Participants:

- Senior Citizens
- At-risk Youth
- Developmentally Disabled Youth
- Disabled Citizens
- Economically Disadvantaged
- Unemployed & Underemployed
- Wilkinsburg families in need of food and clothing assistance.

Meals on Wheels

Food Pantry, Clothing Donations, & Holiday Meals

Energy Assistance

Angel Food

Children's Lunch and After-School Food Partnership

Leadership

Board of Directors

Part-time Staff

Paid Staff

Executive Director – 20 hrs/wk
 Social Service Director – 35 hrs/wk
 Meals on Wheels Coord. – 35 hrs/wk
 Cook – 25 hrs/wk
 Cook Assistant – 25 hrs/wk
 Office Assistant – 35 hours/wk
 Meals on Wheels Scheduler: -- 5 hrs/wk
 Development Coordinator – 5 hrs/wk

Interns and Work-Study Positions

Children's Food Partner Agencies

Edgewood Presbyterian's FROGS
 (Friends, Reading, & Other Great Stuff)
 Kid's Summer and After-school Program

PLEA School (Programs for Living, Education and Advocacy):
 School/Partial Hospital for children with developmental disabilities.

Boys and Girls Club of Wilkinsburg:
 Summer and after-school programs

Second Presbytery Church in Wilkinsburg: After-school program

Churches

1. Deliverance Baptist
2. Christian Church of Wilkinsburg
3. Mifflin Avenue United Methodist Church
4. Beulah Presbyterian
5. South Avenue Methodist
6. Covenant
7. First Presbyterian of Edgewood
8. Wilkinsburg Church of the Nazarene
9. St. Stephens Episcopal
10. Forest Hills Presbyterian
11. Pittsburgh Presbytery
12. St. James Roman Catholic